

Municipality of Harrison Park
UNDER THE AUTHORITY OF THE PLANNING ACT
NOTICE OF PUBLIC HEARING.

On the date and at the time and location shown below, a PUBLIC HEARING will be held to receive representations from any persons who wish to make them in respect to the following matter:

APPLICATION FOR CONDITIONAL USE ORDER under the RM of PARK BY-LAW 1311 as amended.

HEARING: Council Chambers at Municipal Office,
43 Gateway Street, Onanole, Manitoba

To participate in the public hearing via Zoom, please contact the Municipal Office in advance of the hearing at 204-848-7614 for details.

DATE & TIME: December 14th, 2022 - 2:30 p.m.

APPLICATION: 2022 STR CU -08

OWNER(S): Marika Friesen

PROPOSAL To allow the use of a Boarding and Rooming House in the "RG" Residential General Zone under RM of Park Zoning By-Law 1311 Part 7, 7-1 Urban Use Table.
To be operated as a short-term rental.

AREA AFFECTED: #4 – 505 PTH 10
4 Bears Den

FOR INFORMATION CONTACT: Robert Ewashko, Development Officer
Phone: 204-848-2561
Email: Robert@harrisonpark.ca

A copy of the above proposal and supporting material may be inspected or copied at the location noted above during normal office hours, Monday to Friday.

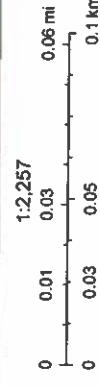
Land Use and Development Map



11/23/2022, 2:20:58 PM

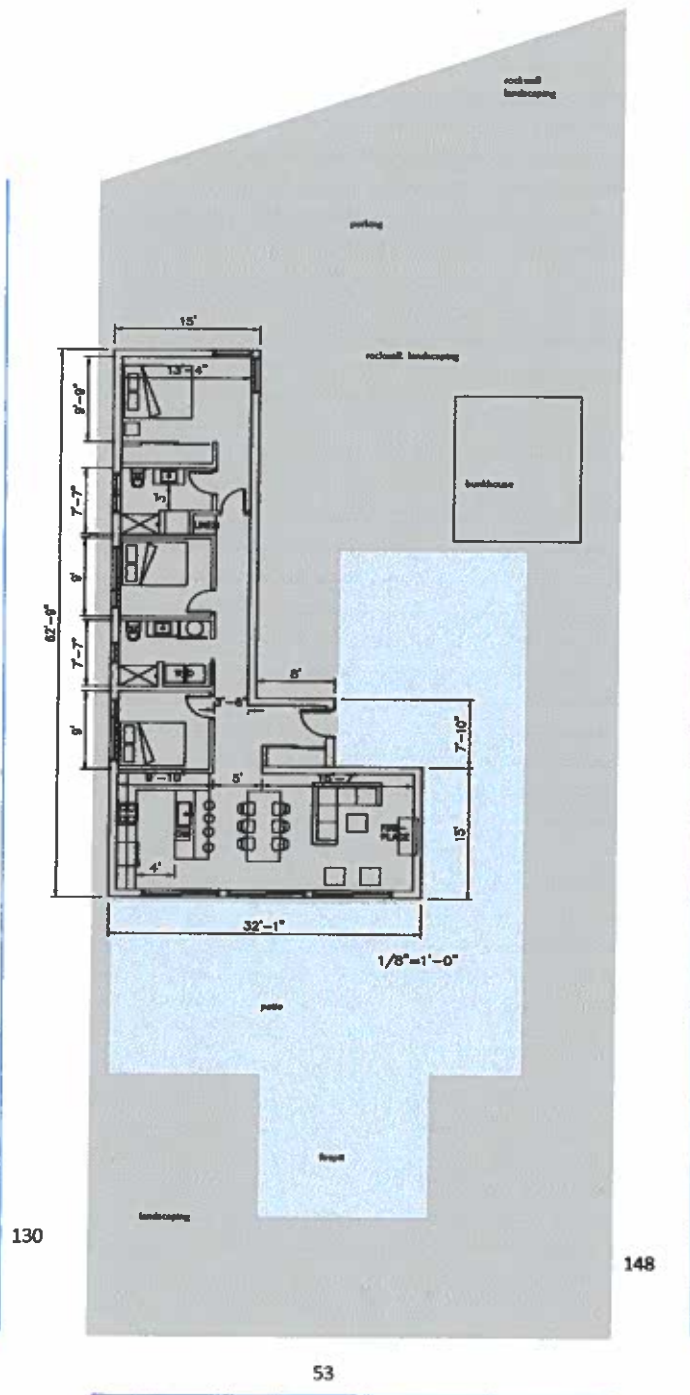
☐ Property Assessment Information

☐ Manitoba Boundary



Esri Community Maps Contributors, Province of Manitoba, Esri Canada, Esri, HERE, Garmin, SafeGraph, GeoTechnologies, Inc., METINASA, USGS, EPA, US Census Bureau, USDA, NRCan, Parks Canada, Manitoba

Source: Esri, Mapbox, Earthstar Geographics, and the GIS User Community | Manitoba | Esri Community Maps Contributors, Province of Manitoba, Esri Canada, Esri, HERE, Garmin, SafeGraph, GeoTechnologies, Inc., METINASA, USGS, EPA, US Census Bureau, USDA, NRCan, Parks Canada | Esri Community Maps Contributors



BEAR'S DEN
Lake Life Living

Lot 4
3 Bed – Modified

~~3 Bed – Modified~~

This is an illustration, to be used as such
and not an architectural drawing and subject to change

MB
DEVELOPMENTS